

An aerial photograph of an airport terminal and tarmac, rendered in grayscale. A semi-transparent white rectangular box is overlaid on the center of the image, containing the text '3. APM Contract Package'. The background shows various airport structures, including the terminal building, parking lots, and aircraft on the tarmac.

# 3. APM Contract Package

## 3. APM Contract Package

---

- 3.1 Contract Scope**
- 3.2 Delivery Schedule**
- 3.3 Contract Estimate**
- 3.4 APM O/S Eligibility Determination**
- 3.5 Procurement Timeline**

# APM Key Considerations

---

## **Separate and Concurrent Processes**

- APM O/S Supplier Eligibility
- APM RFQ (Developer Team)
- Integrated RFP

## **Design/Construction Planning and Logistics**

- Campus-wide unifying design concepts
- Airport operations – efficient Airport operations during construction
  - Work site control and phasing
  - Haul routes and available laydown (on airport campus)
  - Traffic control
- Permitting and environmental compliance
- Minimize impacts to surrounding community

## **Administrative Requirements**

- Robust participation of SBE/MBE/WBE and local business

## **Performance Based Specifications**

- Outcome oriented
- Schedule
- Prescriptive specifications when necessary
- Concept plans and elevations for interfaces

## **Integrated Delivery Coordination**

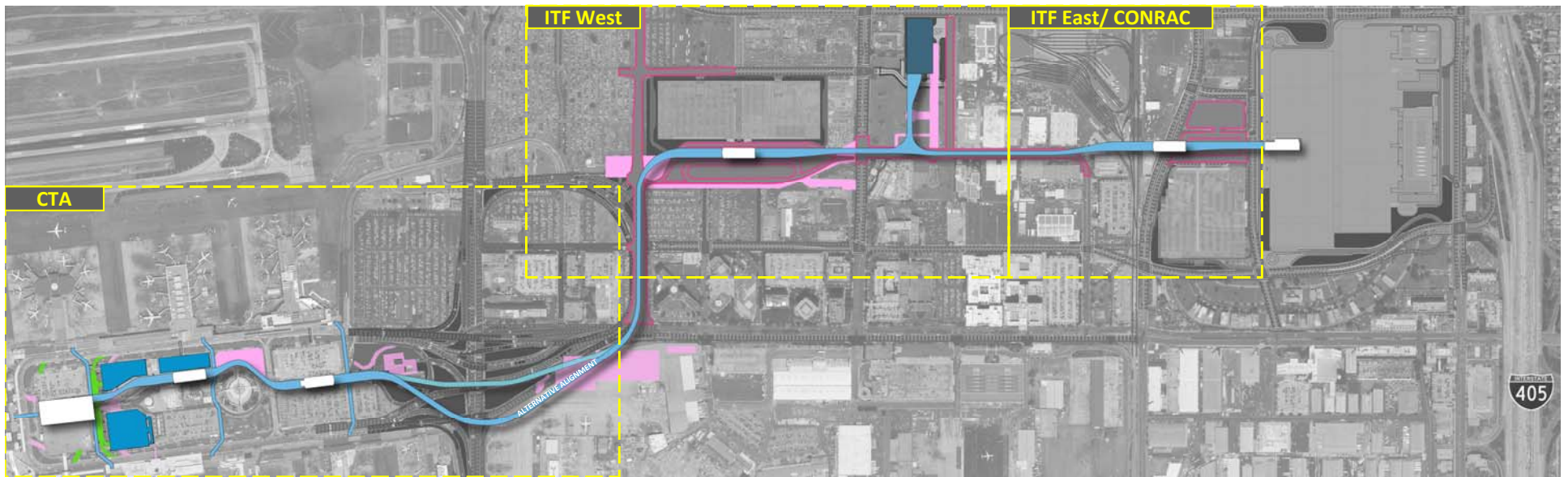
- Design integration
- Construction integration/ installation integration
- APM Operating System testing & commissioning
- Interfaces with
  - Terminal vertical cores
  - ITF's
  - CONRAC
  - Metro

# 3.1 Contract Scope

---

# APM Contract Scope

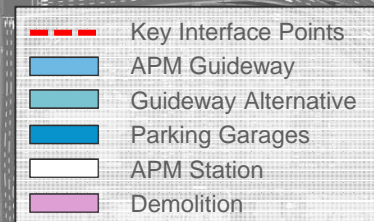
---



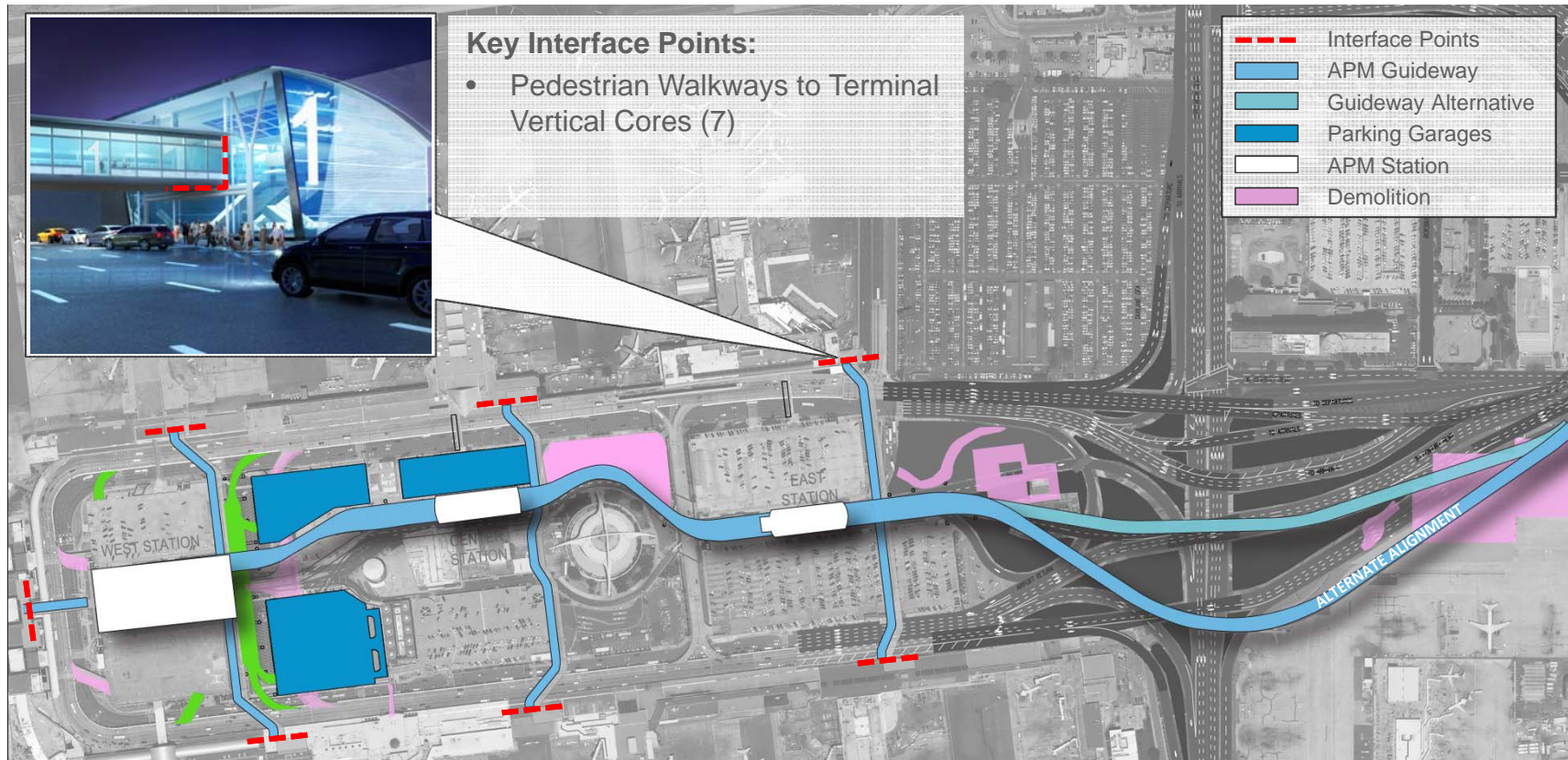
# APM Package – CTA Area

## Project Elements (CTA)

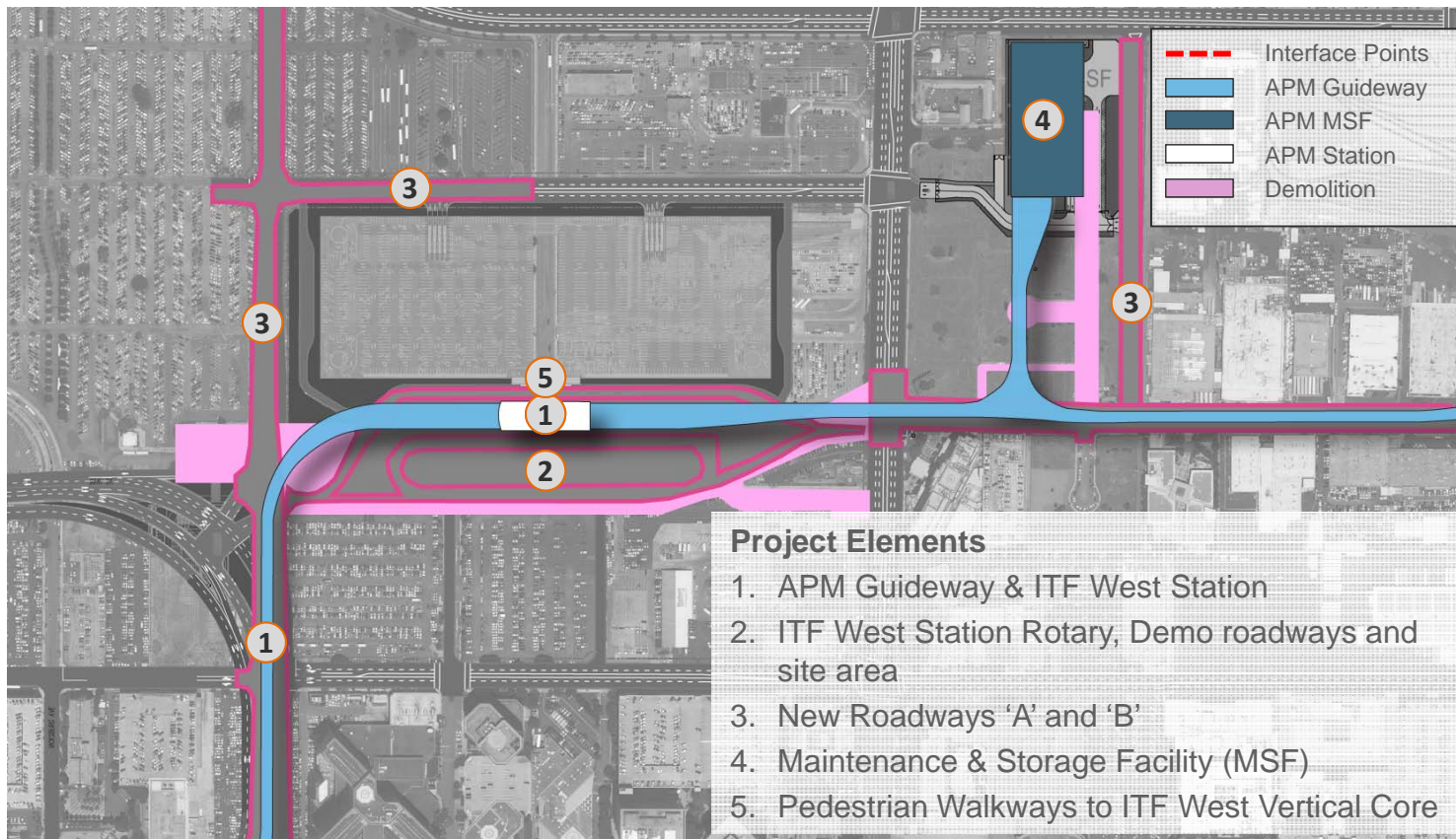
1. Parking Garage P2A, P2B, and P5 Demolition and Reconstruction
2. West Way Demolition and Reconstruction
3. APM Guideway & Stations (West, Center, and East)
4. Center Way Reconstruction
5. Demolition of USO, Admin East, 6150 Complex
6. Pedestrian Walkways to Terminal Vertical Cores (7)



# APM Package – CTA Area

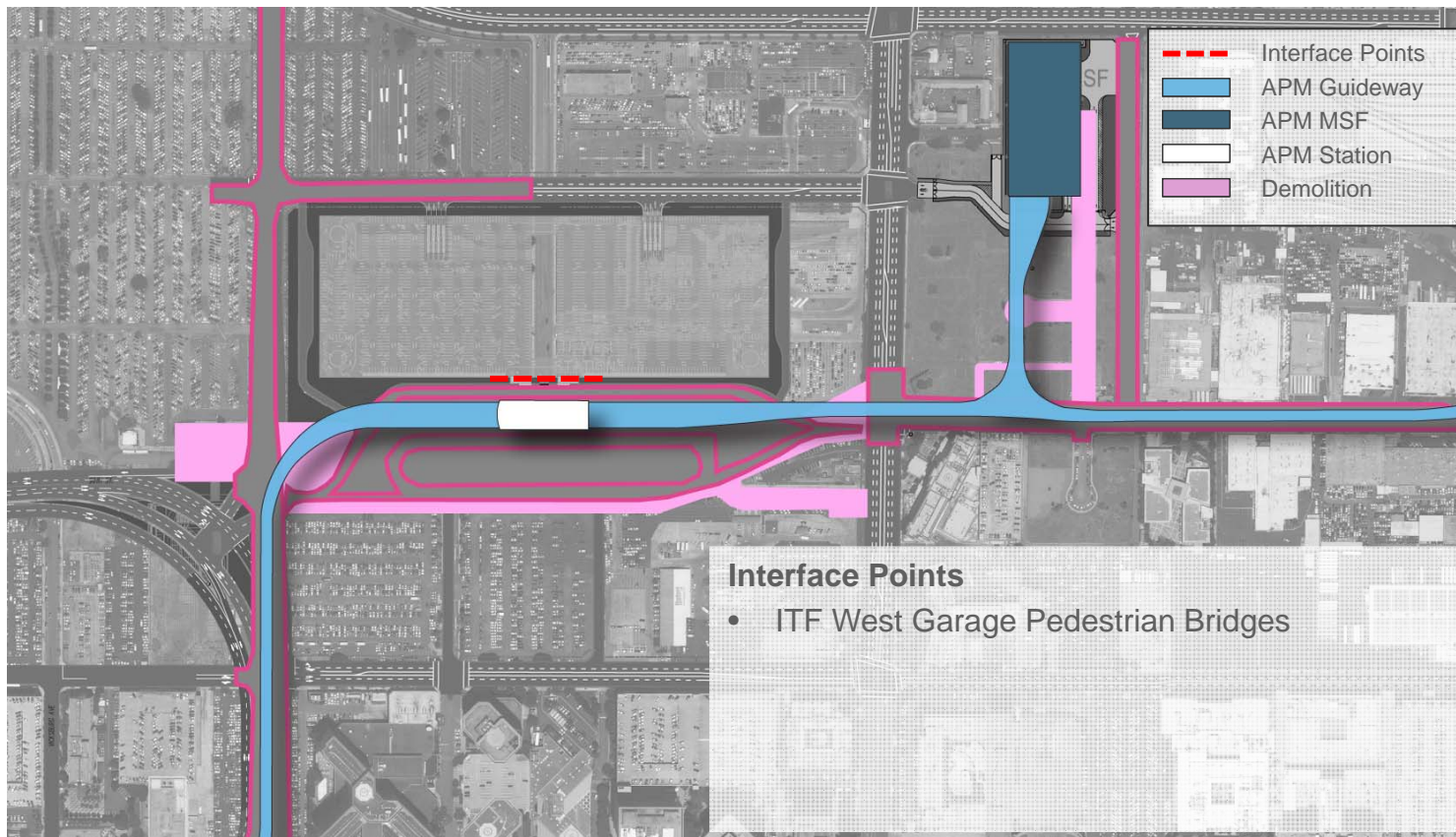


# APM Package – ITF West Area

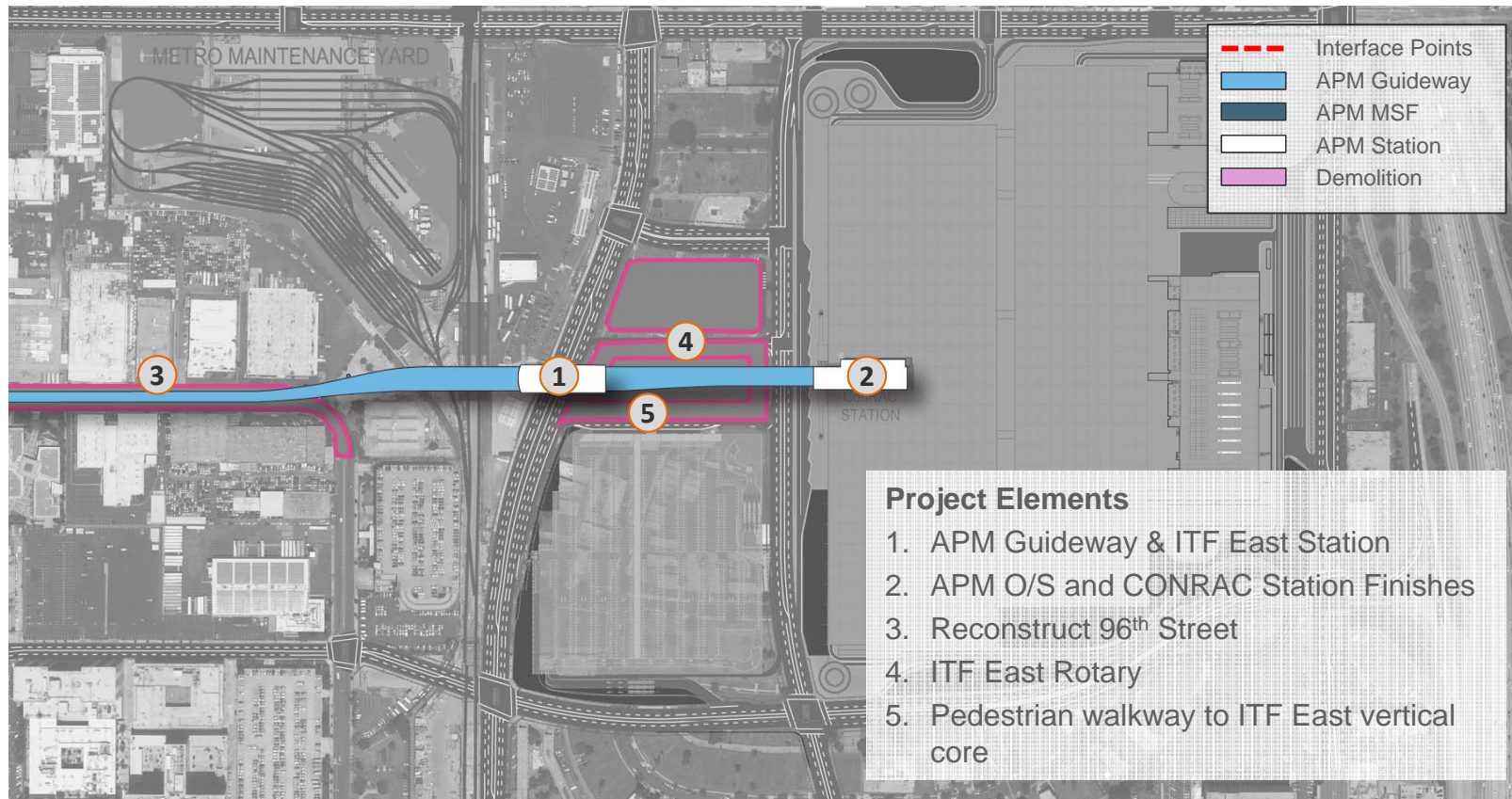




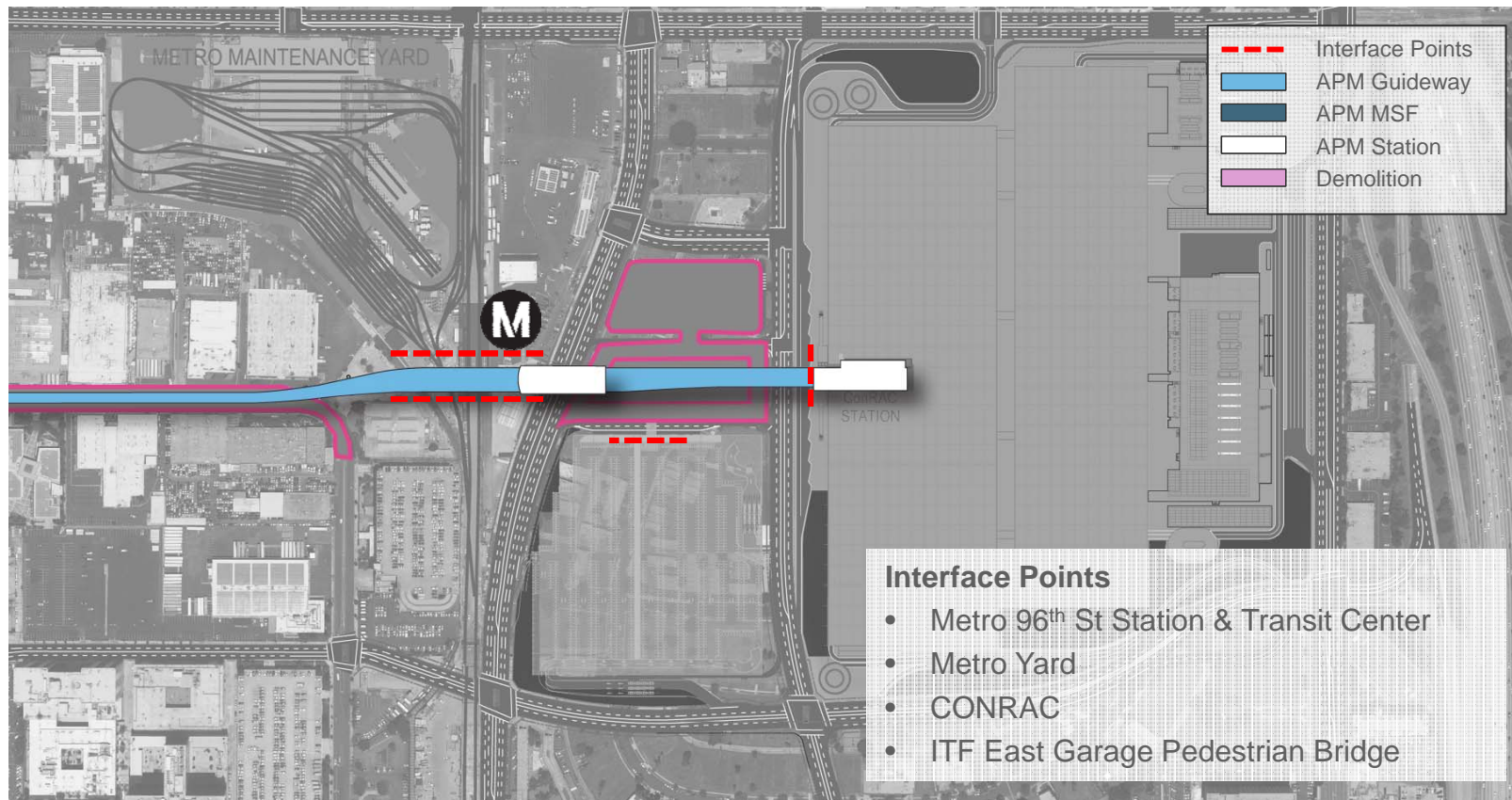
# APM Package – ITF West Area



# APM Package – ITF East/ CONRAC Area



# APM Package – ITF East/ CONRAC Area



## 3.2 Delivery Schedule

---

# Delivery Schedule

APM SCHEDULE	2016				2017				2018				2019				2020				2021				2022				2023			
	1	2	3	4	1	2	3	4	1	2	3	4	1	2	3	4	1	2	3	4	1	2	3	4	1	2	3	4	1	2	3	4
APM Procurement																																
APM Design																																
APM Construction																																
APM System Installation																																
APM System Testing and Commissioning																																
APM Passenger Service																																

## 3.3 Contract Estimate

---

# Contract Estimate

---

Based on Concept Plans, expressed in contract value range (without financing cost)

- **Capital Cost Estimate**

APM Capital Improvements	\$1,850 - \$2,100 million
<u>APM Operating System</u>	<u>\$300 - \$400 million</u>
APM Capital Contract Value Estimate	\$2,150 - \$2,500 million

- **Annual Operating & Maintenance Cost Estimate**

APM Operating System	\$9.0 - \$12.0 million
APM Fixed Facilities	\$2.5 - \$3.0 million

- **APM Operating System Capital Asset Replacement Program: \$ TBD**

# 3.4 APM Operating System (O/S) Eligibility Determination

---



# APM O/S Eligibility Determination

---

## **APM Package Elements**

- APM O/S
- APM Fixed Facilities and Other components (CTA garages, pedestrian walkways, etc.)

## **APM Procurement Process**

- RFQ to shortlist APM Developer Teams (excluding APM O/S)
- Concurrent Eligibility Determination of APM O/S Suppliers
- Integrated Request for Proposals (RFP)

## **Developer Teams respond to the Integrated RFP**

- Shortlisted Developer Teams Integrate Eligible APM O/S Suppliers
- Must respond to entire scope - inclusive of APM O/S
- Team (and team members) must meet applicable administrative requirements
- All other aspects as defined in the RFP

## APM O/S Eligibility Determination

---

- Mitigate against “risky APM Operating System technology”
- Maximize the competitive environment
- Industry self-selects participation
- Anticipated Project specific APM O/S performance requirements
- Eligibility does not imply a certification or “guarantee” of the APM O/S performance. Shortlisted APM Developer Team has the responsibility to:
  - Select and integrate Eligible O/S Suppliers;
  - Optimize to meet APM O/S performance requirements

# APM O/S Eligibility Determination

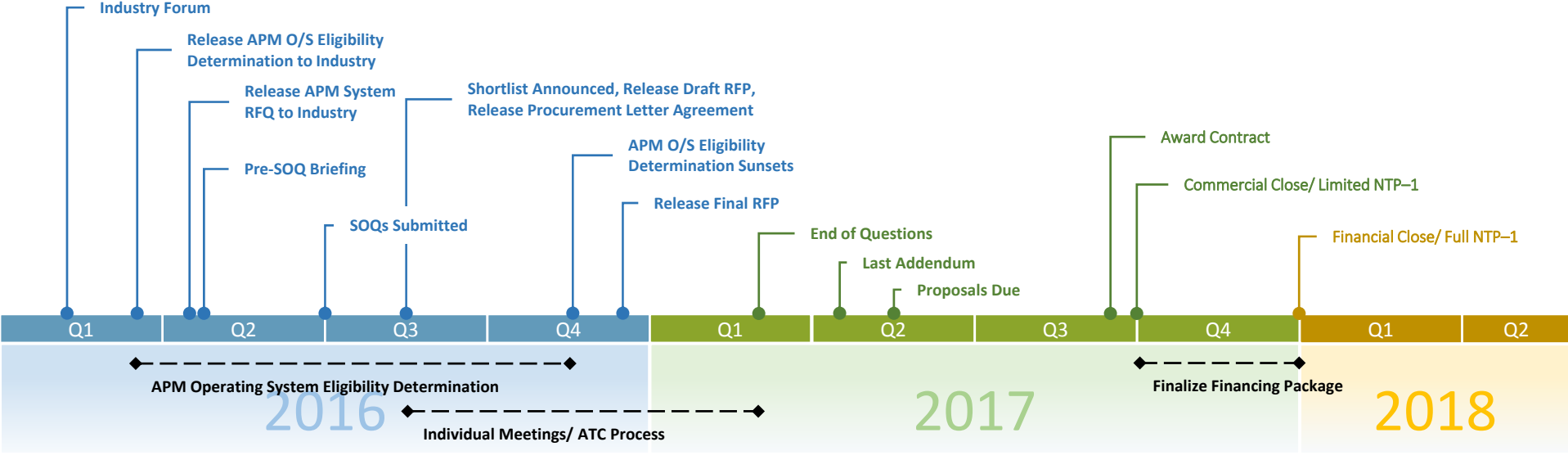
---

- Open window to submit requests for Eligibility Determination
- Communication and additional submittals permitted in support of “Supplier Eligibility Determination”
- “Eligibility Checklist” or Criteria:
  - Administrative
  - Technical and Experience Requirements
    - ✓ Technical Maturity of Supplier’s APM O/S technology
    - ✓ Supplier’s ability to adapt, integrate and deliver the APM O/S technology to meet Project performance requirements within project physical constraints

# 3.5 Procurement Timeline

---

# Procurement Timeline



Industry Forum (Feb 2016)

This document contains draft information for deliberative purposes only, and is subject to CEQA/NEPA compliance, currently in progress.

